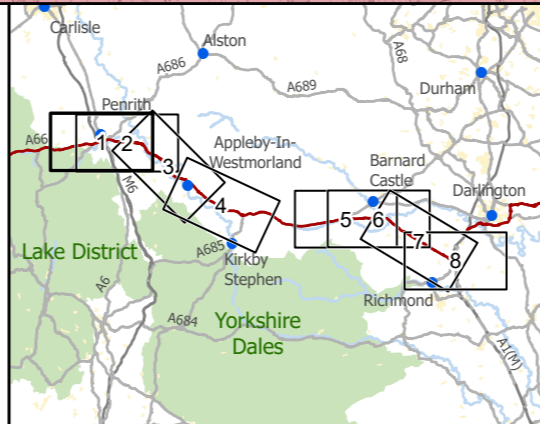


- Existing A66
- Order Limits
- Study Area 3km
- Urban Areas
- Landscape Character Areas (Multiple Colours)



national highways  
 3 Piccadilly Place  
 Manchester  
 M1 3BN

P02	First Issue				
	PKELL	CESL	JSIM	AMIT	KWHA
	17/03/22	17/03/22	17/03/22	20/04/22	20/04/22
Revision	Created	Checked	Reviewed	Approved	Authorised

Kilometres

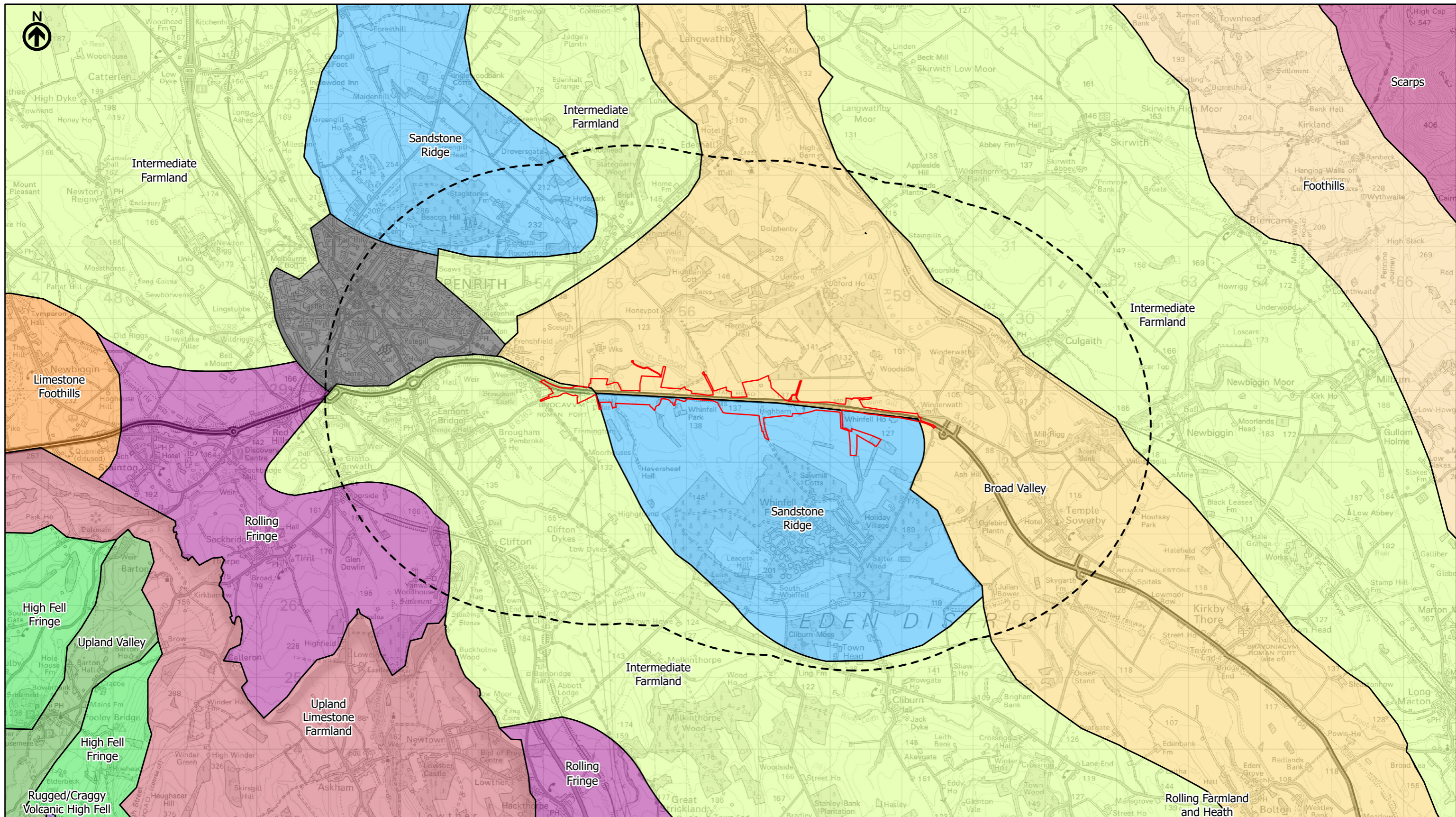
Scale @ A3: 1:50,000 | Project Ref No HE565627 | Stage: Stage 3  
 © Crown copyright and database rights (2022). All rights reserved. OS 100030649.  
 Contains public sector information licensed under the Open Government Licence v3.0.

Project Name  
**A66 Northern Trans-Pennine Project**

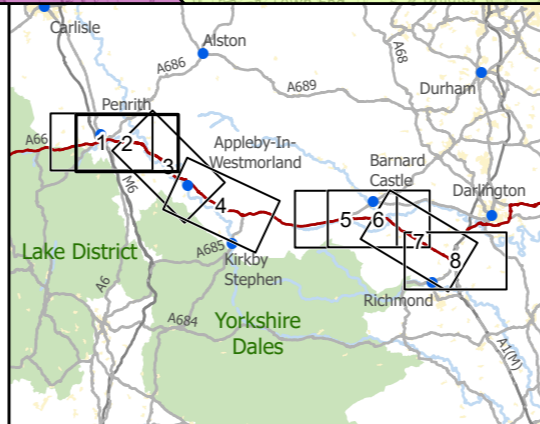
Map Title  
**Figure 10.5**  
 Landscape Character  
 Scheme: 0102, M6 Junction 40 to Kemplay Bank  
 Sheet 1 of 8

Map Number	Project	Originator	Volume	
HE565627	-	AMY	- ELS	
S00	-	MP - LL	- 006080	
Suitability	Location	Type	Role	Number
S4	FIT FOR STAGE APPROVAL			P02



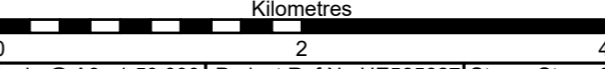


- Existing A66
- Order Limits
- Study Area 3km
- Urban Areas
- Landscape Character Areas (Multiple Colours)



**national highways**  
 3 Piccadilly Place  
 Manchester  
 M1 3BN

P02	First Issue	PKELL	CESL	JSIM	AMIT	KWHA
	Created	17/03/22	17/03/22	17/03/22	20/04/22	20/04/22
Revision	Checked	Reviewed	Approved	Authorised		



Scale @ A3: 1:50,000 | Project Ref No HE565627 | Stage: Stage 3  
 © Crown copyright and database rights (2022). All rights reserved. OS 100030649.  
 Contains public sector information licensed under the Open Government Licence v3.0.

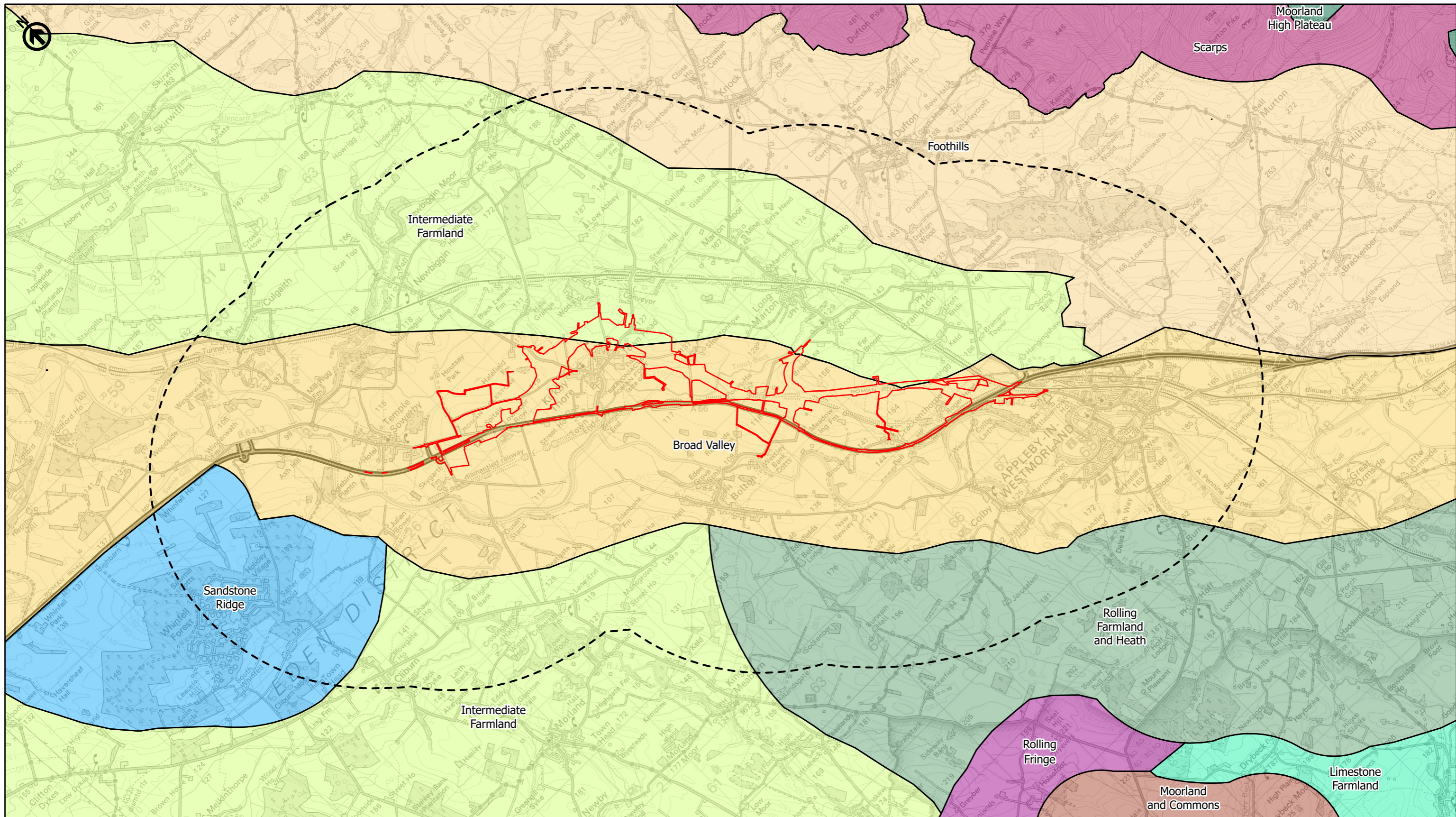
Project Name  
**A66 Northern Trans-Pennine Project**

Map Title  
**Figure 10.5**

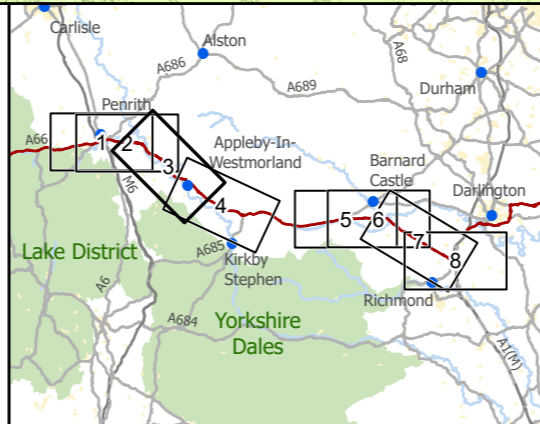
Landscape Character  
 Scheme: 03, Penrith to Temple Sowerby  
 Sheet 2 of 8

Map Number	Project	Originator	Volume
HE565627	-	AMY	-
S00	-	MP	-
Location	Type	Role	Number
S4	FIT FOR STAGE APPROVAL		P02





- Existing A66
- Order Limits
- Study Area 3km
- Landscape Character Areas (Multiple Colours)



**national highways**  
 3 Piccadilly Place  
 Manchester  
 M1 3BN

P02	First Issue				
	PKELL	CESL	JSIM	AMIT	KWHA
	17/03/22	17/03/22	17/03/22	20/04/22	20/04/22
Revision	Created	Checked	Reviewed	Approved	Authorised

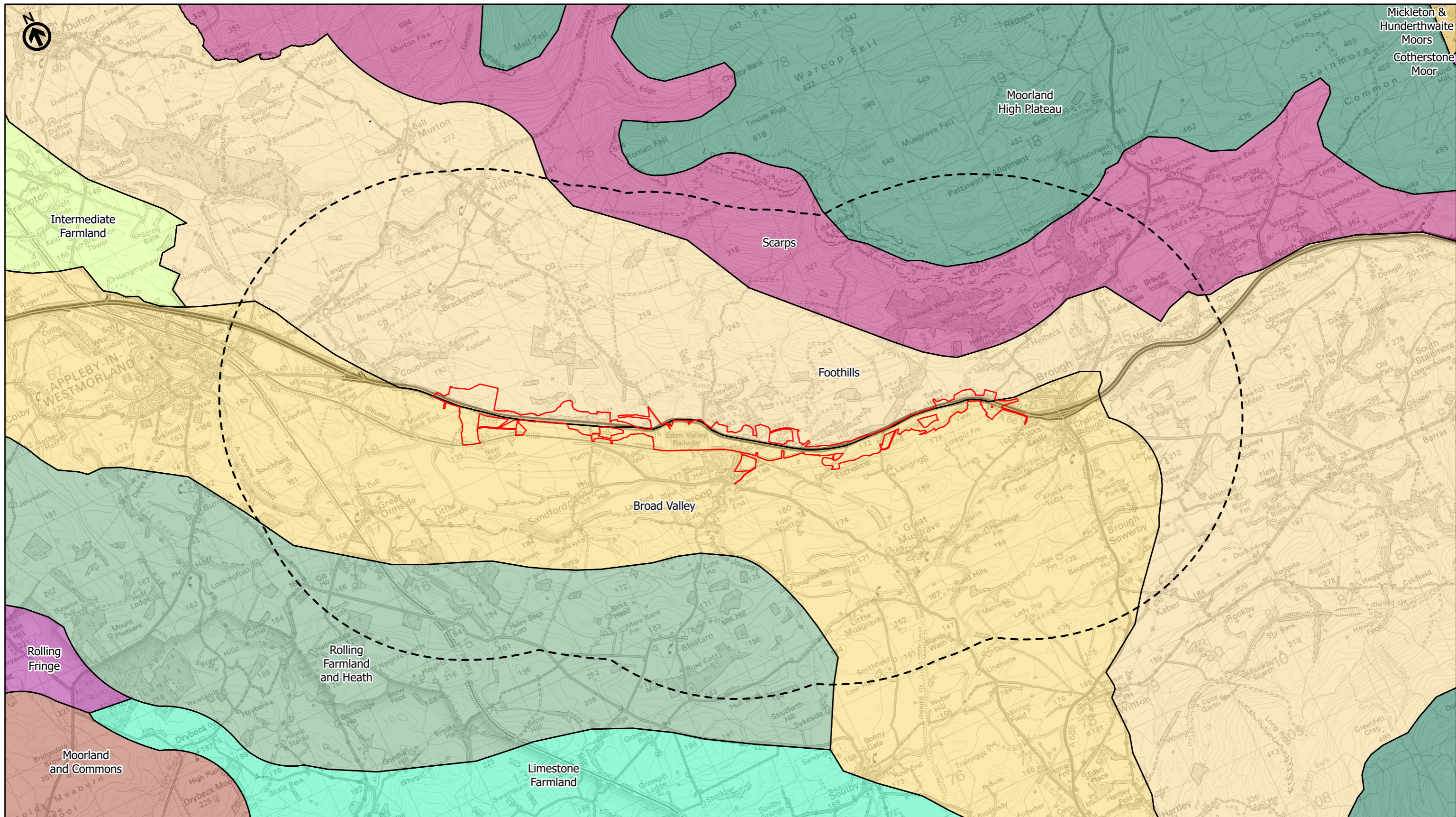
Kilometres

0 ————— 2 ————— 4

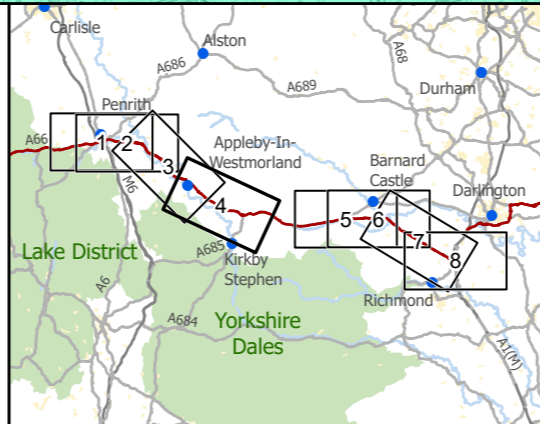
Scale @ A3: 1:50,000 | Project Ref No HE565627 | Stage: Stage 3  
 © Crown copyright and database rights (2022). All rights reserved. OS 100030649.  
 Contains public sector information licensed under the Open Government Licence v3.0.

Project Name <b>A66 Northern Trans-Pennine Project</b>			
Map Title <b>Figure 10.5</b>			
Landscape Character <b>Scheme: 0405, Temple Sowerby to Appleby</b>			
<b>Sheet 3 of 8</b>			
Map Number Project	Originator	Volume	
HE565627	AMY	ELS	
S00	- MP - LL	- 006082	
Location	Type	Role	Number
S4	FIT FOR STAGE APPROVAL		P02





- Existing A66
- Order Limits
- Study Area 3km
- Landscape Character Areas (Multiple Colours)



**national highways** 3 Piccadilly Place  
Manchester M1 3BN

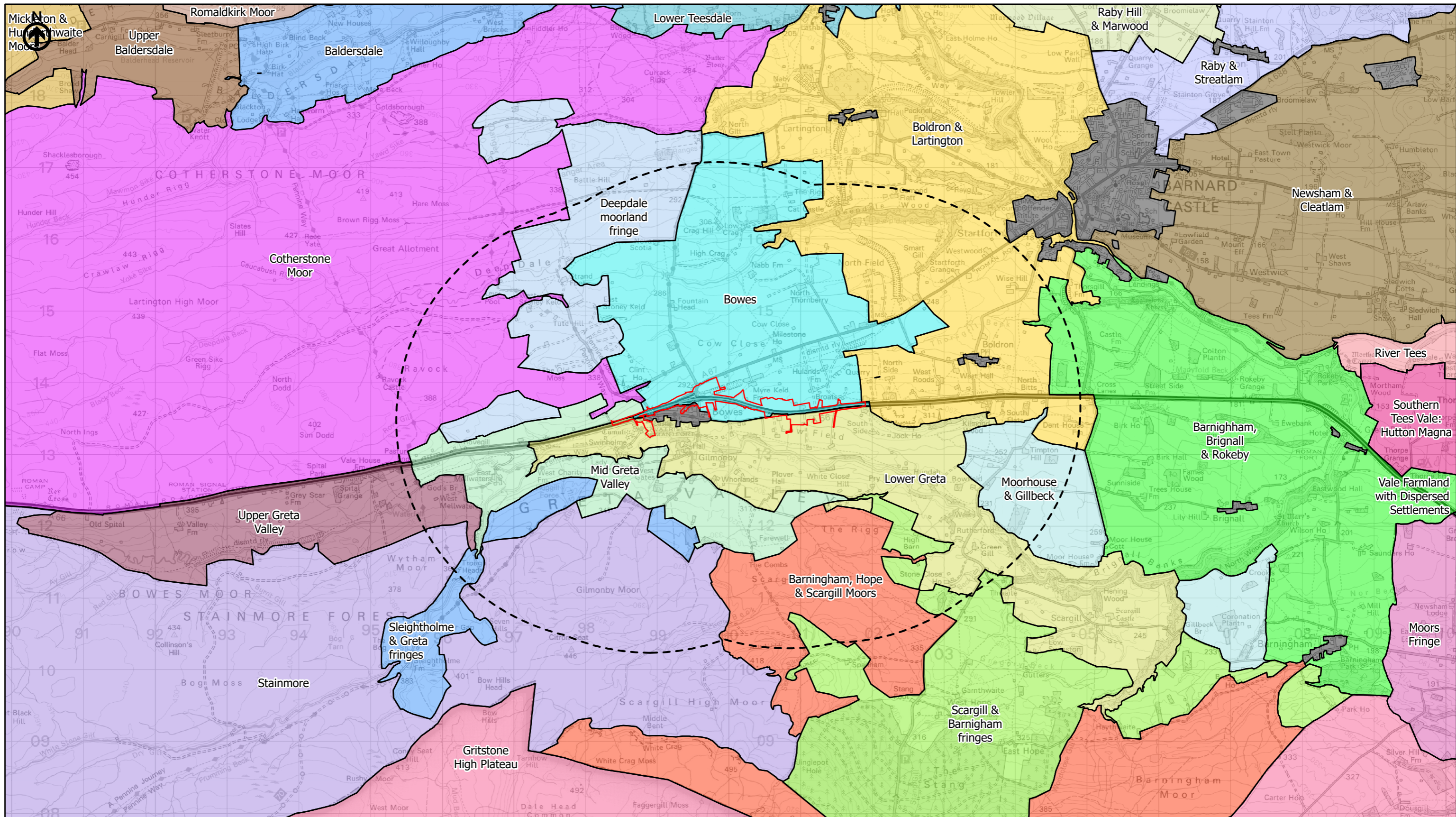
P02	First Issue				
	PKELL	CESL	JSIM	AMIT	KWHA
	17/03/22	17/03/22	17/03/22	20/04/22	20/04/22
Revision	Created	Checked	Reviewed	Approved	Authorised

Kilometres  
0 2 4

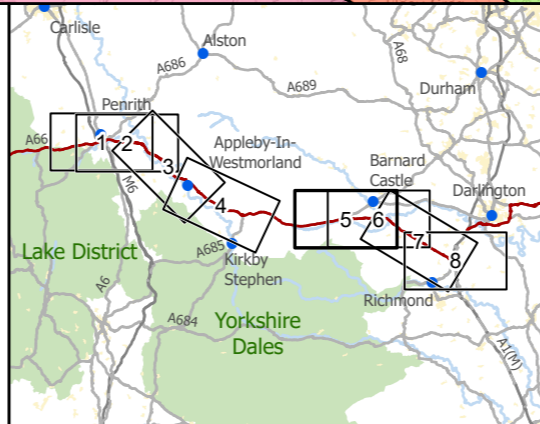
Scale @ A3: 1:50,000 | Project Ref No HE565627 | Stage: Stage 3  
© Crown copyright and database rights (2022). All rights reserved. OS 100030649.  
Contains public sector information licensed under the Open Government Licence v3.0.

Project Name <b>A66 Northern Trans-Pennine Project</b>			
Map Title <b>Figure 10.5</b>			
Landscape Character <b>Scheme: 06, Appleyby to Brough</b>			
Sheet 4 of 8			
Map Number Project	Originator	Volume	
HE565627	AMY	ELS	
S00	MP	LL	006083
Location	Type	Role	Number
S4	FIT FOR STAGE APPROVAL		P02





- Existing A66
- Order Limits
- Study Area 3km
- Urban Areas
- Landscape Character Areas (Multiple Colours)



national highways  
 3 Piccadilly Place  
 Manchester  
 M1 3BN

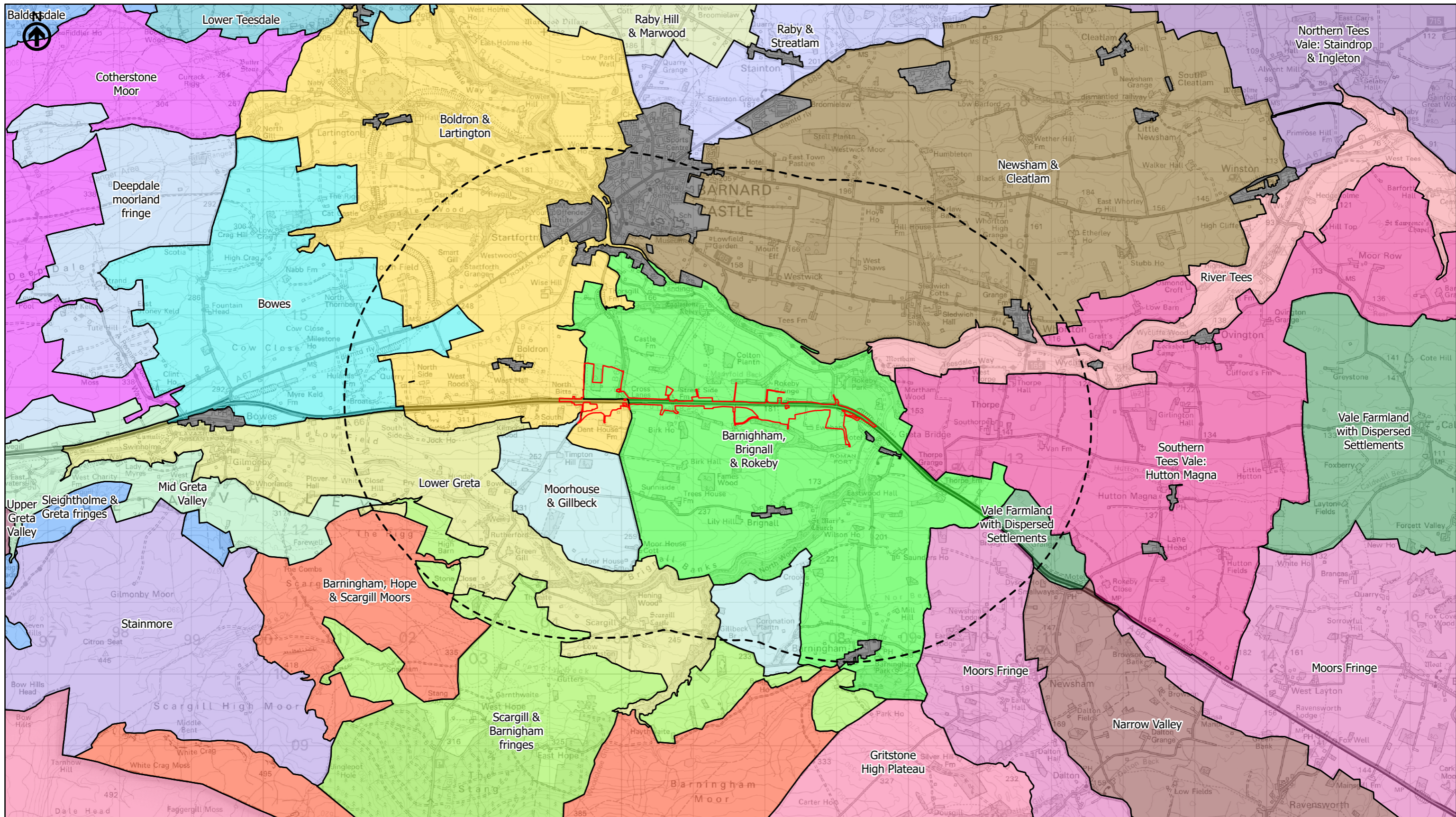
P02	First Issue				
	PKELL	CESL	JSIM	AMIT	KWHA
	17/03/22	17/03/22	17/03/22	20/04/22	20/04/22
Revision	Created	Checked	Reviewed	Approved	Authorised

Kilometres

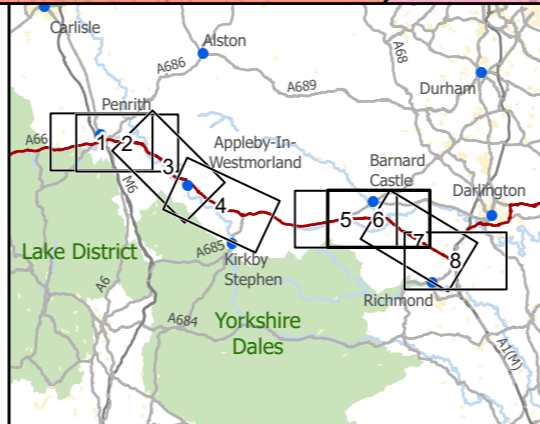
Scale @ A3: 1:50,000 | Project Ref No HE565627 | Stage: Stage 3  
 © Crown copyright and database rights (2022). All rights reserved. OS 100030649.  
 Contains public sector information licensed under the Open Government Licence v3.0.

Project Name <b>A66 Northern Trans-Pennine Project</b>			
Map Title <b>Figure 10.5</b>			
Landscape Character <b>Scheme: 07, Bowes Bypass</b>			
Sheet 5 of 8			
Map Number Project	Originator	Volume	
HE565627	AMY	ELS	
Location		Type	Role
S00		MP	LL
S00		006084	
Suitability	Suitability Description		Revision
S4	FIT FOR STAGE APPROVAL		P02





- Existing A66
- Order Limits
- Study Area 3km
- Urban Areas
- Landscape Character Areas (Multiple Colours)



**national highways**  
3 Piccadilly Place  
Manchester  
M1 3BN

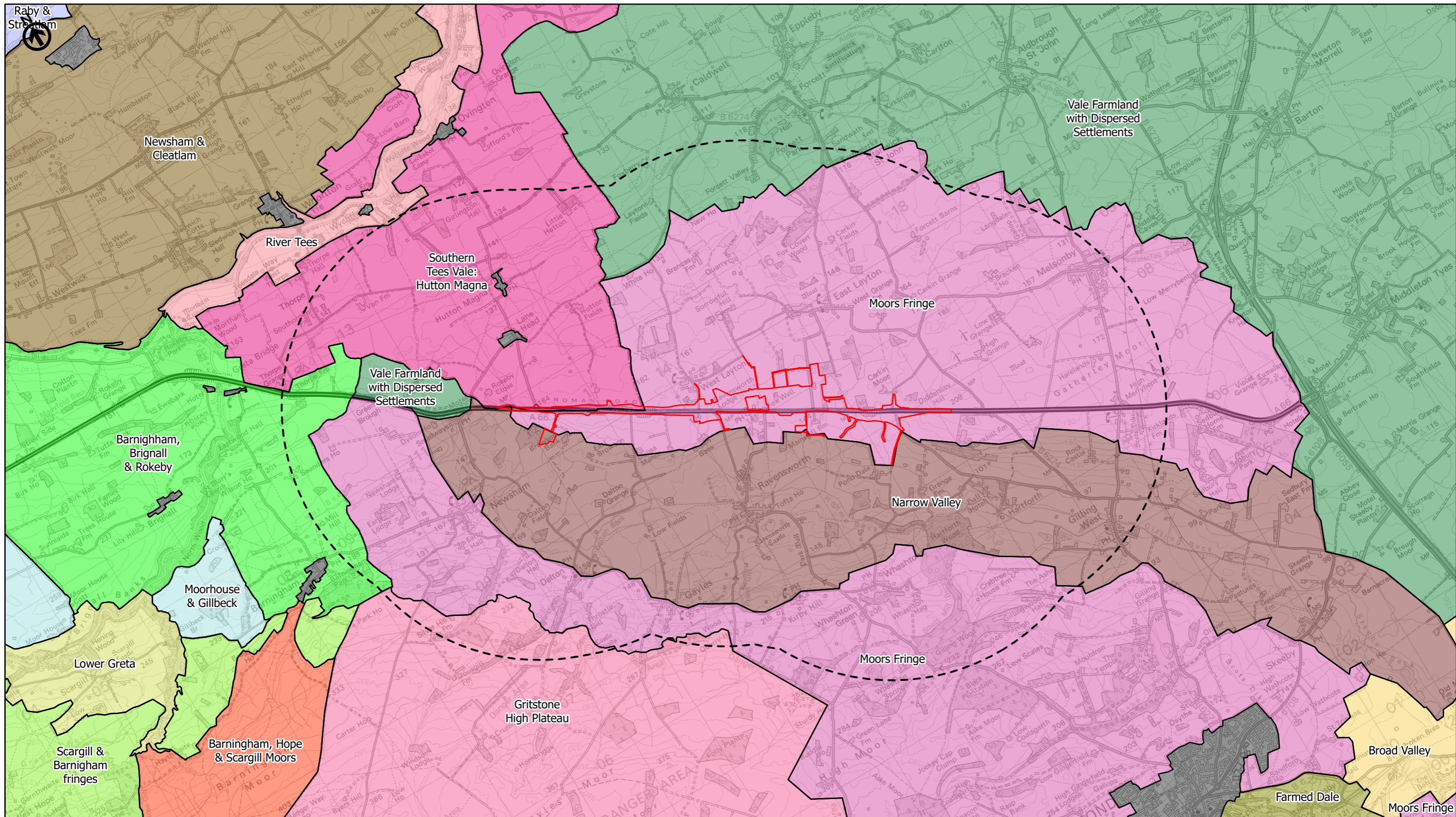
P02	First Issue	PKELL	CESL	JSIM	AMIT	KWHA
		17/03/22	17/03/22	17/03/22	20/04/22	20/04/22
Revision	Created	Checked	Reviewed	Approved	Authorised	

Kilometres  
0 2 4

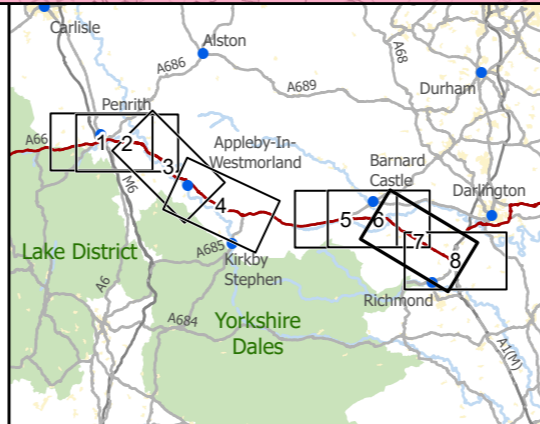
Scale @ A3: 1:50,000 | Project Ref No HE565627 | Stage: Stage 3  
© Crown copyright and database rights (2022). All rights reserved. OS 100030649.  
Contains public sector information licensed under the Open Government Licence v3.0.

Project Name <b>A66 Northern Trans-Pennine Project</b>			
Map Title <b>Figure 10.5</b>			
Landscape Character <b>Scheme: 08, Cross Lanes to Rokeby</b>			
Sheet 6 of 8			
Map Number Project	Originator	Volume	
HE565627	AMY	ELS	
S00	-	MP - LL	- 006085
Location	Type	Role	Number
S4	FIT FOR STAGE APPROVAL		P02



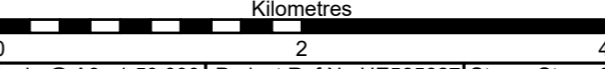


- Existing A66
- Order Limits
- Study Area 3km
- Urban Areas
- Landscape Character Areas (Multiple Colours)



national highways  
 3 Piccadilly Place  
 Manchester  
 M1 3BN

P02	First Issue				
	PKELL	CESL	JSIM	AMIT	KWHA
Revision	Created	Checked	Reviewed	Approved	Authorised
	17/03/22	17/03/22	17/03/22	20/04/22	20/04/22



Scale @ A3: 1:50,000 | Project Ref No HE565627 | Stage: Stage 3  
 © Crown copyright and database rights (2022). All rights reserved. OS 100030649.  
 Contains public sector information licensed under the Open Government Licence v3.0.

Project Name  
**A66 Northern Trans-Pennine Project**

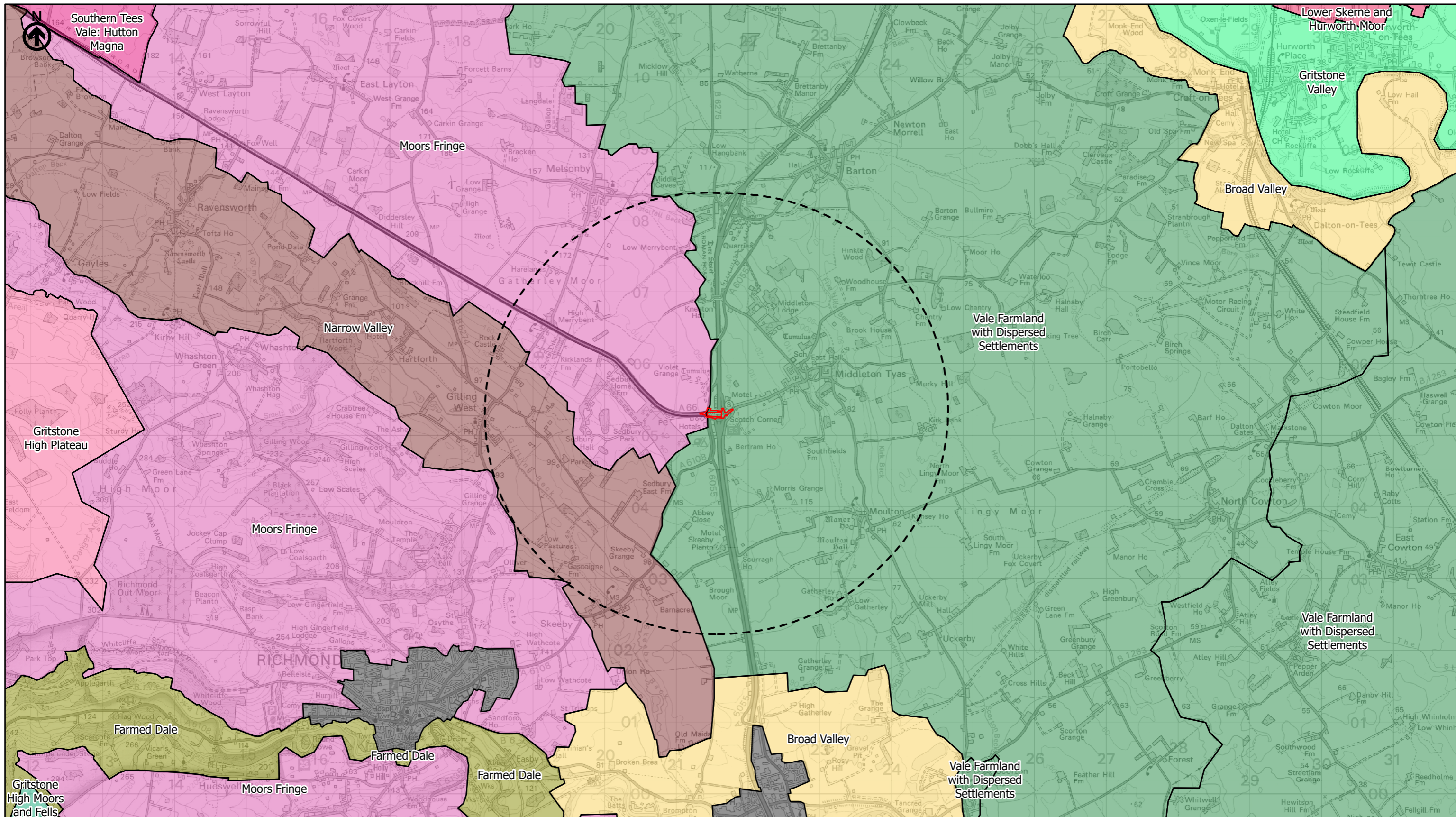
Map Title  
**Figure 10.5**

Landscape Character  
**Scheme: 09, Stephen Bank to Carkin Moor**  
**Sheet 7 of 8**

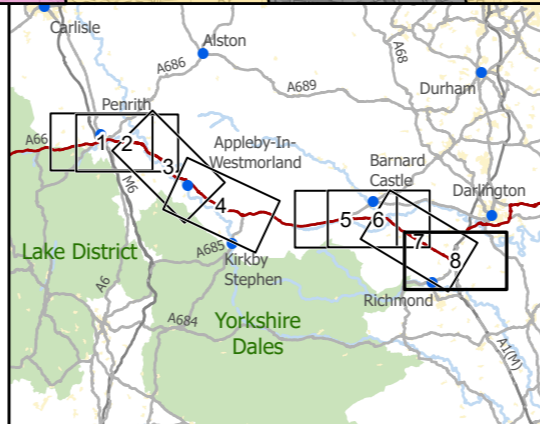
Map Number	Project	Originator	Volume
HE565627	-	AMY	-
S00	-	MP	-
Location	Type	Role	Number
			006086

Suitability	Suitability Description	Revision
S4	FIT FOR STAGE APPROVAL	P02



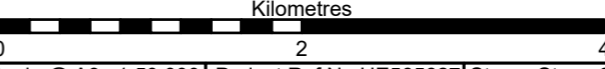


- Existing A66
- Order Limits
- Study Area 3km
- Urban Areas
- Landscape Character Areas (Multiple Colours)



3 Piccadilly Place  
Manchester  
M1 3BN

P02	First Issue				
	PKELL	CESL	JSIM	AMIT	KWHA
Revision	Created	Checked	Reviewed	Approved	Authorised
	17/03/22	17/03/22	17/03/22	20/04/22	20/04/22



Scale @ A3: 1:50,000 | Project Ref No HE565627 | Stage: Stage 3  
© Crown copyright and database rights (2022). All rights reserved. OS 100030649.  
Contains public sector information licensed under the Open Government Licence v3.0.

Project Name  
**A66 Northern Trans-Pennine Project**

Map Title  
**Figure 10.5**

Landscape Character  
**Scheme: 11, A1(M) Junction 53 Scotch Corner**

**Sheet 8 of 8**

Map Number	Project	Originator	Volume
HE565627	-	AMY	-
S00	-	MP - LL	-
Location		Type	Role

Suitability	Suitability Description	Revision
S4	FIT FOR STAGE APPROVAL	P02